

# clever



## 8 Southern Terrace

, Plymouth, PL4 7LS

**£130**

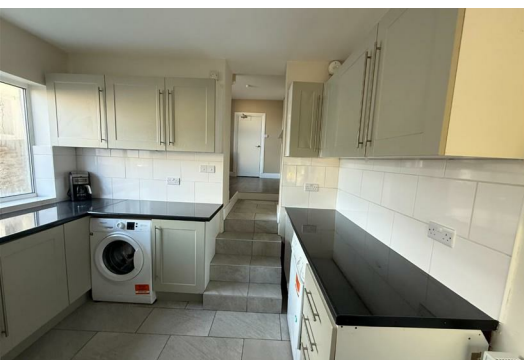


\*\*\* ROOMS AVAILABLE IN SHARED HOUSE\*\*\*

Nestled in the charming Southern Terrace of Plymouth, this delightful mid-terrace house offers a perfect blend of modern living and classic character. Built in 1900, the property has been thoughtfully updated to meet contemporary standards while retaining its original charm. Spanning an impressive 1,453 square feet, this spacious home features three inviting reception rooms, providing ample space for both relaxation and entertaining.

The property boasts five well-proportioned bedrooms, ensuring plenty of room for family or guests. With two modern bathrooms, morning routines will be a breeze, catering to the needs of a busy household. The layout is designed to maximise comfort and functionality, making it an ideal choice for families or professionals seeking a stylish yet practical living space.

In addition to its generous living areas, the home benefits from permit parking, offering convenience in this vibrant area. The location is perfect for those who appreciate the blend of urban amenities and the natural



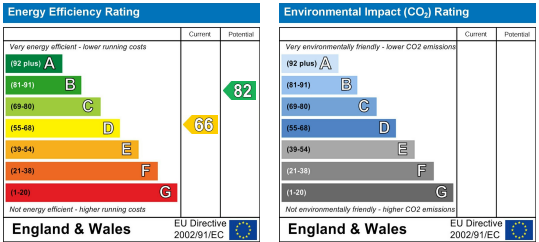
Area Map



Floor Plans



Energy Efficiency Graph



These particulars, whilst believed to be accurate are set out as a general outline only for guidance and do not constitute any part of an offer or contract. Intending purchasers should not rely on them as statements of representation of fact, but must satisfy themselves by inspection or otherwise as to their accuracy. No person in this firms employment has the authority to make or give any representation or warranty in respect of the property.